

HOW TO SORT AND PUT OUT WASTE

[英語]

- Be sure to take out household waste to the designated collection site in your community by 8:00 a.m. on fixed days.
- **Never take out waste on days other than the designated collection days.**
- Before discarding, make sure to sort household waste based on this pamphlet and put it into a plastic bag designated by the city.
- Never take out oversize waste (waste larger than the capacity of the designated plastic bag) to household waste collection sites.

You can search on the city's website for detailed information on how to discard household waste. (The website is available in Japanese.)

<http://www.gomisaku.jp/0026/>

ごみサク すずかし 鈴鹿市 Search



Combustible waste (Green plastic bags designated by the City of Suzuka)

Put out video cassette tapes with combustible waste. (Please remove the covers and put them out properly.)
Papers
Combustible waste
Others
Incombustible waste

Plastic waste (Pink plastic bags designated by the City of Suzuka)

Plastic containers and plastic packages are categorized as plastic waste.



Remove any dirt before discarding.
When it is difficult to wash off dirt, discard it as combustible waste.

Incombustible waste (Transparent plastic bags designated by the City of Suzuka)

Be sure to remove the nozzle at the top of the can outdoors after emptying it completely.

How to dispose of spray cans and gas cartridges or canisters

After emptying, make sure to punch a hole in the can, cartridge or canister in a well-ventilated place outdoors away from flames.

Put only spray cans and gas cartridges or canisters in a colorless and transparent bag (where the contents are visible) and place them in a bag separate from other non-burnable garbage.

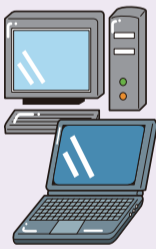
Gas punchers are distributed at Haikibutsu Taisaku-ka, Suzuka City Government, and each Division Civic Center.



Harmful waste (Yellow designated garbage bags or colorless and transparent bags (so that contents are visible))

Separate "dry batteries" and "other harmful waste" for disposal

Personal computers (PCs)



Personal computers (PCs) must be disposed of in either of the following ways:

- ① Personally bring to the Incombustibles Recycling Center.
- ② Apply for collection to each PC manufacturer's collection reception office.

If you do not know which is your PC manufacturer, contact the PC3R Promotion Association.

(<http://www.pc3r.jp> TEL : 03-5282-7685)

Never dispose of them at the city's household waste collection sites.

The designated four types of electric appliances

Never dispose of them at the city's household waste collection sites.

They are not collected as oversize waste.

- ① When you make a replacement purchase
- ② If you know where you purchased the old electric appliance
- ③ In other cases

Make a request for collection to the electric appliance disposal trader licensed by the city (Reiyu Co., Ltd.)
TEL:059-382-1155 FAX:059-382-4872

Fees for waste collection, transport and recycling are required for both types of waste

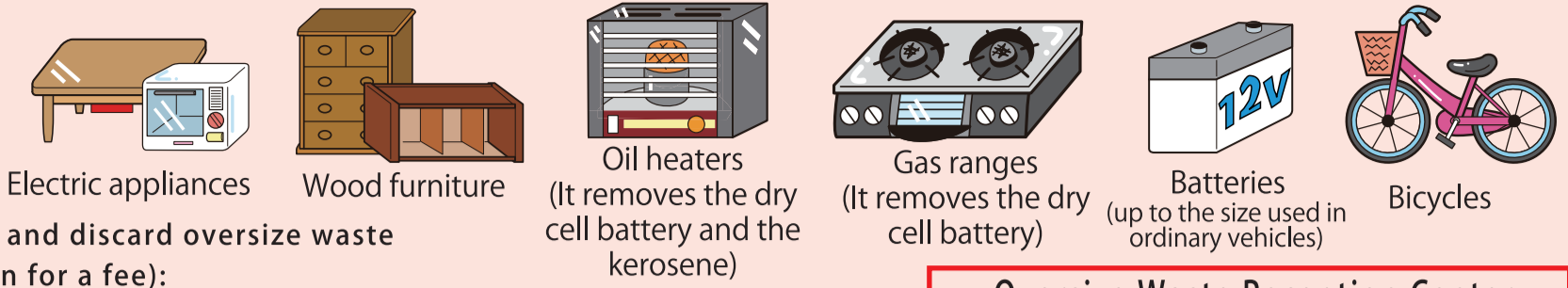
Illegal dumping of garbage

Please note that if you discard trash on roadsides or vacant land without permission, you can be sentenced to up to five years' imprisonment for forced labor or a fine of up to 10 million yen.

Oversize waste

(Waste that is over 5kg or cannot be fit in a plastic bag designated by the city should be categorized as oversize waste.)

Never dispose of them at the city's household waste collection sites.



How to apply for collection and discard oversize waste (direct from home collection for a fee):

- Make a phone call to the Oversize Waste Reception Center to apply for collection.
- An "Oversize Waste Ticket" (200 yen each) needs to be purchased per waste for disposal.
- If you are in need of interpretation service in Portuguese or Spanish, please call Gaikokujin Koryu-shitu, Shimin Taiwa-ka, Suzuka City Government.

TEL: 059-382-9058

- Make sure to put oversize waste out in front of your house (or the entrance area of the 1st floor for an apartment building) by 8:00 a.m. on the scheduled collection day.
- Firmly attach the "Oversize Waste Ticket" to the oversize waste so that it can be easily recognized.

Where to purchase the Oversize Waste Ticket:

- Supermarkets and convenience stores (not available in some stores)
- The store on the 15th floor of the city hall
- Each District Civic Center

Oversize Waste Reception Center

TEL 059-382-7646

Available time: 8:30 to 17:15

Monday to Friday

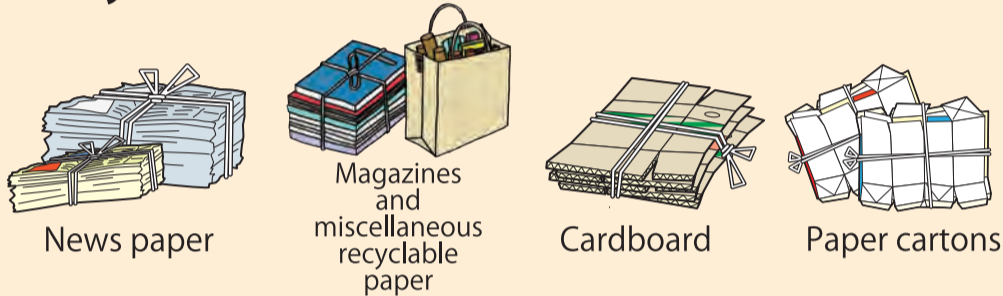
(excl. national holidays, year-end and New Year holidays)



Oversize Waste Ticket (200 yen each)

Recyclables A

(Take out to the designated recyclables collection site in your community.)



- When taking out to the collection site, tie them crosswise to form a bundle, according to type.
- Miscellaneous recyclable paper can be placed in paper bags found at home and put out at recyclable waste collection points.
- Before discarding paper cartons, rinse the inside with water, dry, and cut them open. Paper cartons with aluminum foil inside should be disposed of as **combustible waste**.

Recyclables B

(Take out to the designated recyclables collection site in your community.)



- For empty cans, glass bottles and plastic (PET) bottles, rinse the inside and put them into the designated basket at the collection site.
- When putting empty glass bottles into the designated basket, sort them according to three types of color.
- Metal lids, caps, and other wrappers of glass bottles should be disposed of as **incombustible waste**.
- Labels and caps of plastic (PET) bottles should be disposed of as **plastic waste**.
- When discarding clothes, put them into a transparent plastic bag. Down jackets, hanten short coats, clothes with deep stains and underclothes should be disposed of as **combustible waste**.

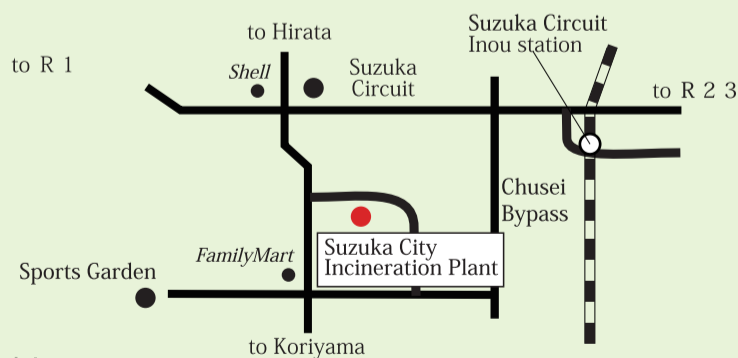
If you live in an apartment building with no recyclables collection area → Bring them to a recyclables collection box located in your local supermarket. Alternatively, dispose of newspapers, magazines, cardboard, paper cartons and clothes as **combustible waste** and empty cans, glass bottles and PET bottles as **incombustible waste**.

It is also possible to personally bring waste to the city's waste disposal facilities.

Available time: 9:00 to 12:00 and 13:00 to 16:00 on Monday to Saturday excl. year-end and New Year holidays
Free up to 500 kg (restricted to household waste)

Suzuka City Incineration Plant

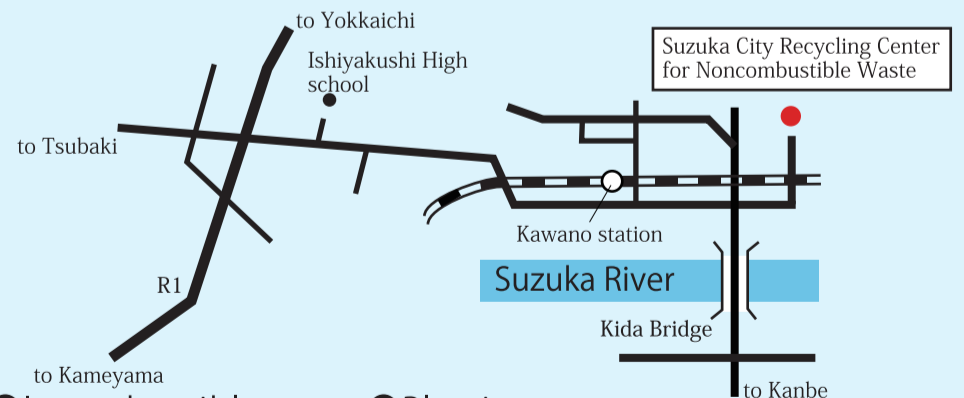
[Misonocho 3688 TEL:059-372-1646]



- Combustible waste
- Oversize combustible waste
- Combustible recyclables (Newspapers, Magazines, Cardboard, Paper cartons, Clothes)

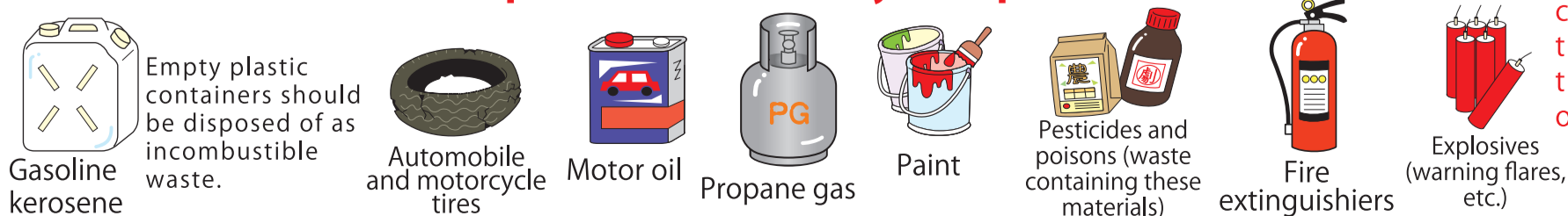
Suzuka City Recycling Center for Noncombustible Waste

[Kokubuchicho 1700 TEL:059-374-4141]



- Incombustible waste
- Plastic waste
- Hazardous waste
- Oversize incombustible waste
- All kinds of recyclables

Waste that cannot be disposed of at the city's disposal facilities



Apply for collection/disposal to their dealer or a trader specialized on waste disposal.